



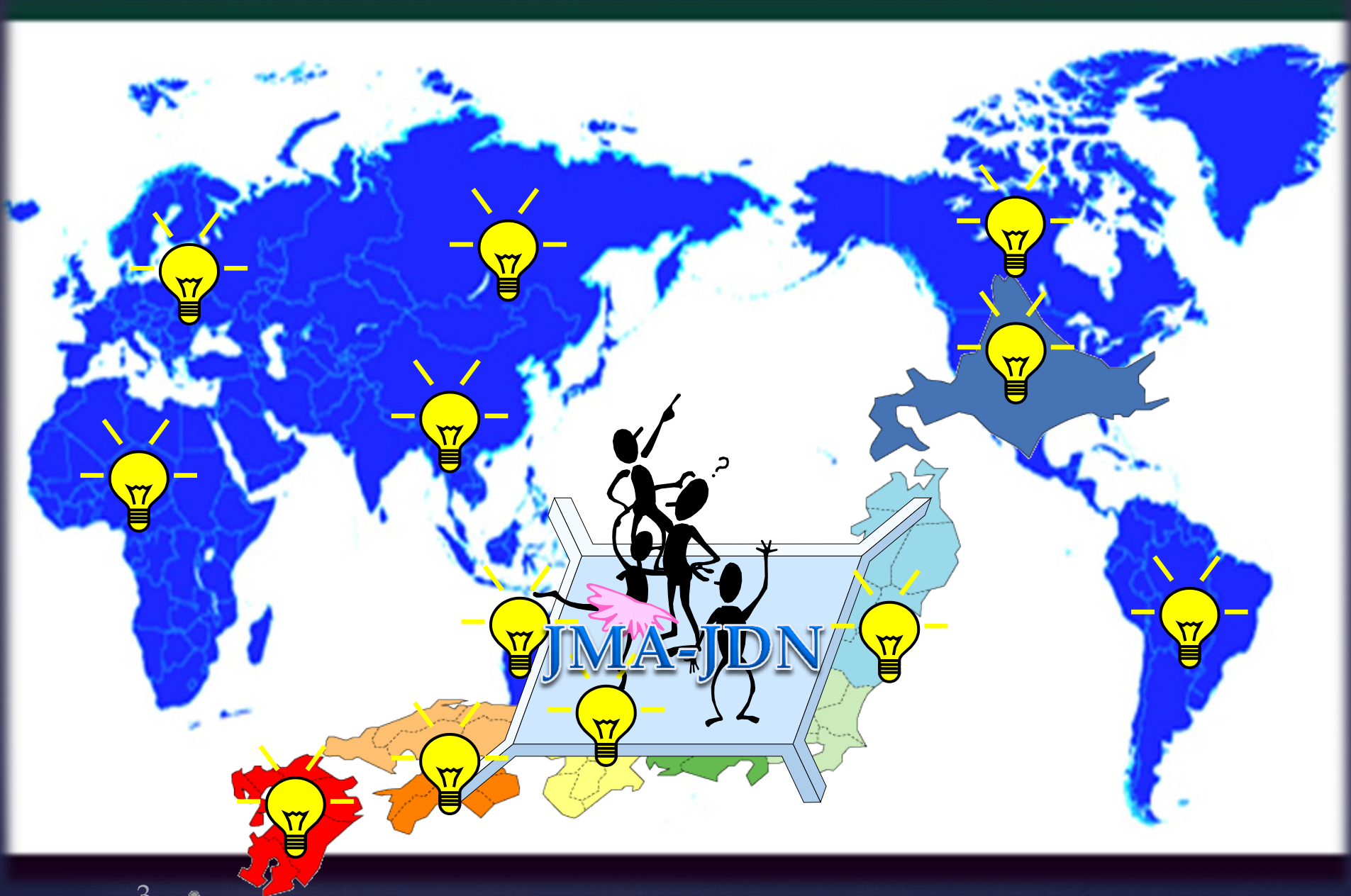
Japan Medical Association Junior Doctors Network

{ Chair, Kazuhiro Abe
{ April, 27th, 2014



- ⌘ Japan Medical Association-Junior Doctors Network
- ⌘ Started from 2013
- ⌘ 21 core members
- ⌘ The national representative body for all junior doctors in Japan.

What is the JMA-JDN?



3

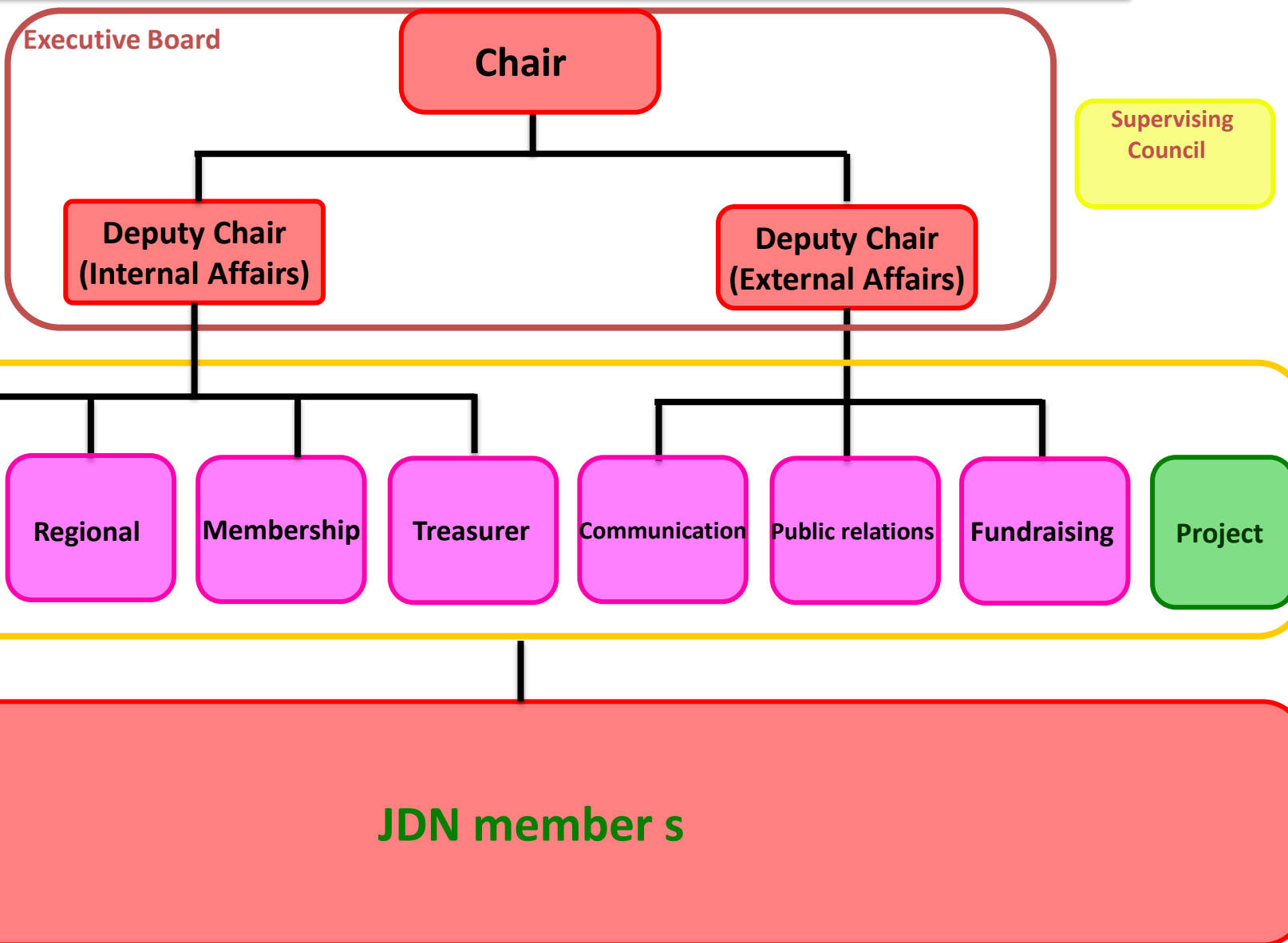
The concept of JMA-JDN

↳ The network is the national representative body for all junior doctors in Japan, providing a platform for Japanese junior doctors to develop broad activities in public health and health policy, improve the health of our communities, and encourage our members to foster relationships with the worldwide community.

↳ 国際社会との繋がりの下、幅広い視野と高い倫理観・使命観を持ち、医療・医学・保健を通じて公衆衛生の向上を目指す若手医師のネットワークである

What is our vision?

JMA-JDN Structure Draft



- ⌘ Annual Survey Project for the Residents
 - Topics: Work hours, fatigue, mentorship, Satisfaction of the program, Health policy.

- ⌘ Exchange Program for the JDN
 - Takemi Program
 - looking for others

- ⌘ National General Assembly
 - Keynotes, Work Shops, Lectures, Social Programs

- ⌘ Monthly Online Meeting
 - operational management

What is our Activities?

Brief overview

Notional survey in Japan

JDN-Japan medical association

Shin-u Hayashi

- JDN-Japan medical association plan to survey Junior Doctors' actual situation at work, interest and so on.
- First we check Earlier survey.

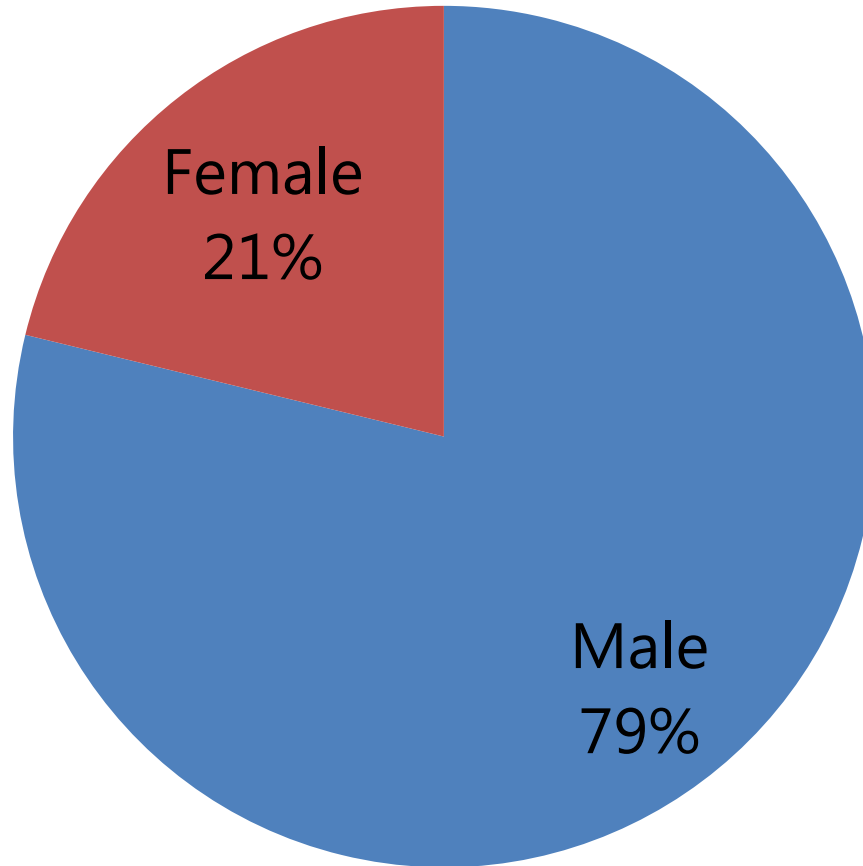
There is **Hospital doctor fact-finding survey about work** had done By Executive committee **2012** on Hospital doctor fact-finding survey about work ,Collaborated with Japan Pediatric Society et al.

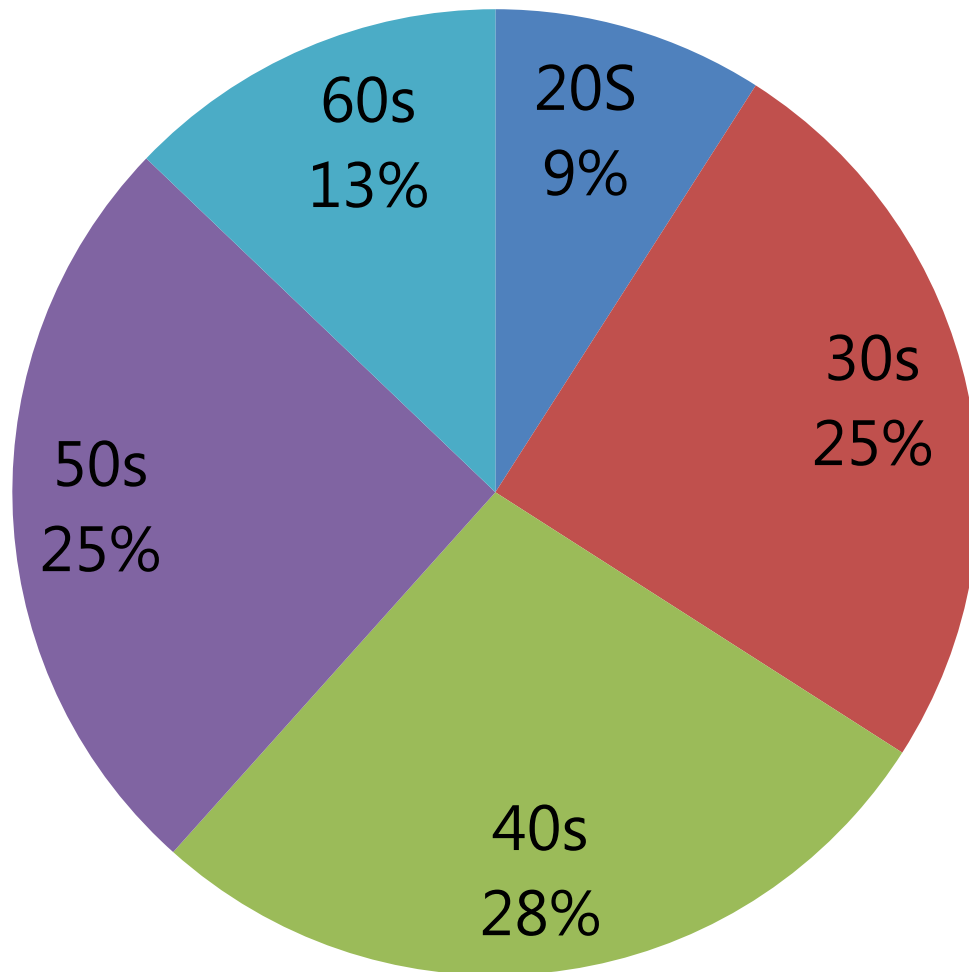
This survey(n=2108) include **20s doctor** (n=191), **junior resident**(n=191), **senior resident**(n=85)

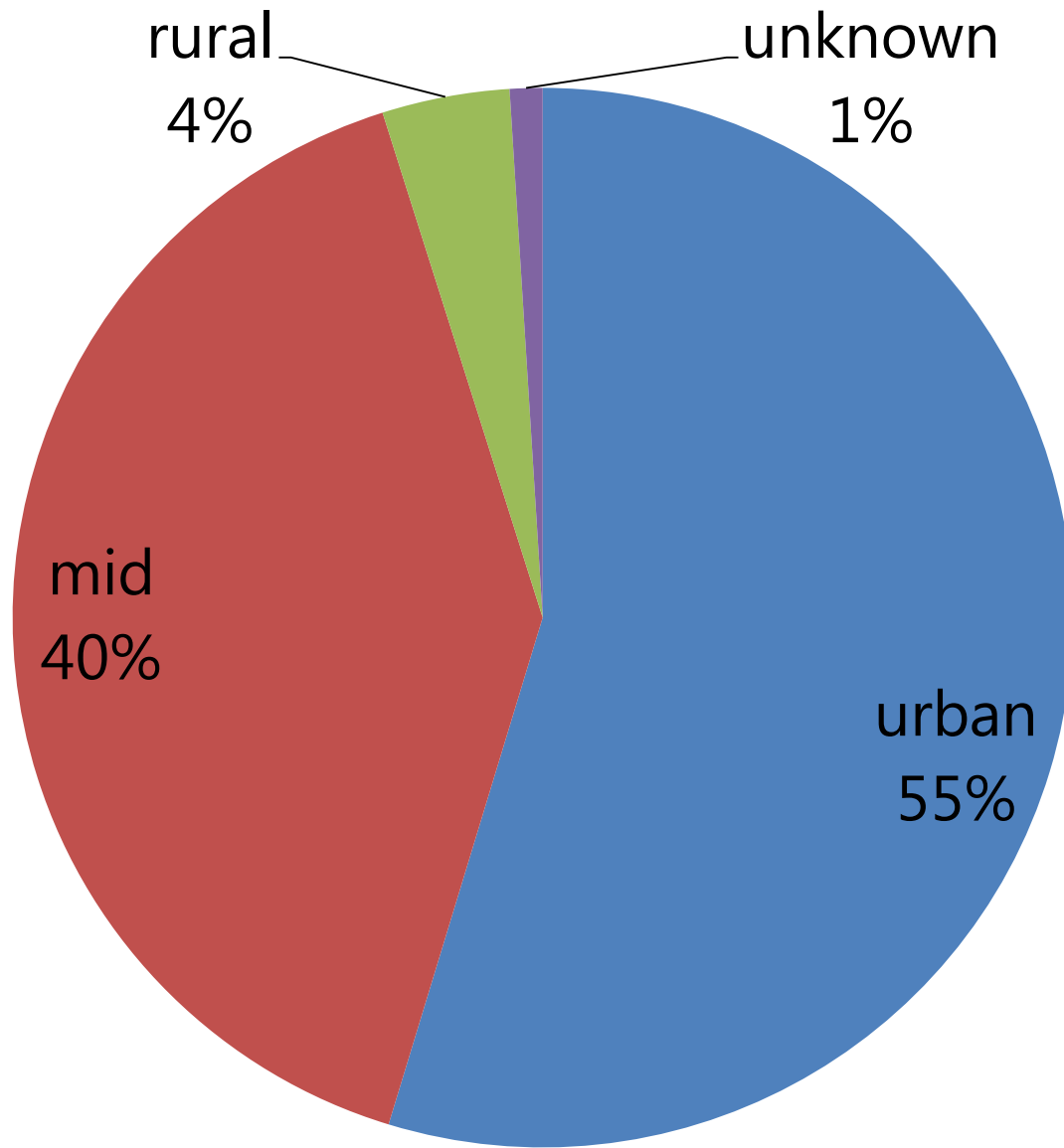
Junior resident is 1or2nd

Senior resident is 3~5th year doctor.

N=2108







	EU	USA	JAPAN
Regulation	EU Parliament	ACGME	The Labor Standards
Work hours limitation /week	48 hour	80 hour	40 hour
On call	Work hours		Not work hours (on trial)

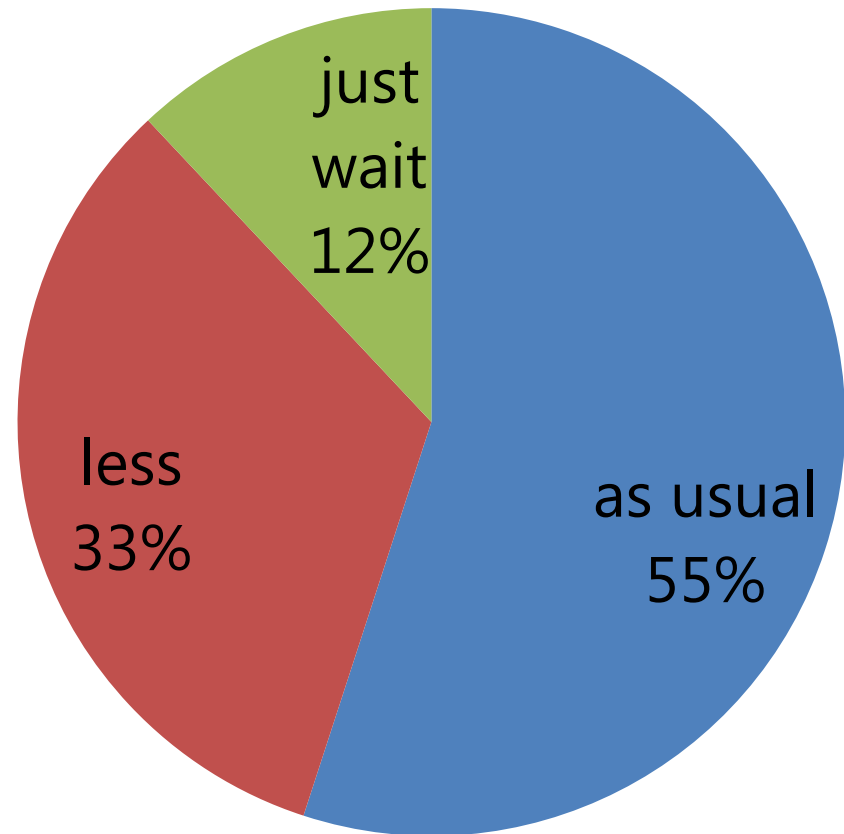
	Work hors /week	Over night work /month	Week end work /month	On call day /month	Non- work day /month
1,2y Dr.	64.4* hour	3.4 days	0.7 days	1.5 days	4.7 days
3~5y Dr.	64.2* hour	3.3 days	1.0 days	6.4 days	3.8 days

*On call is not included in work hours.

*Over night work may not be included in work hours.

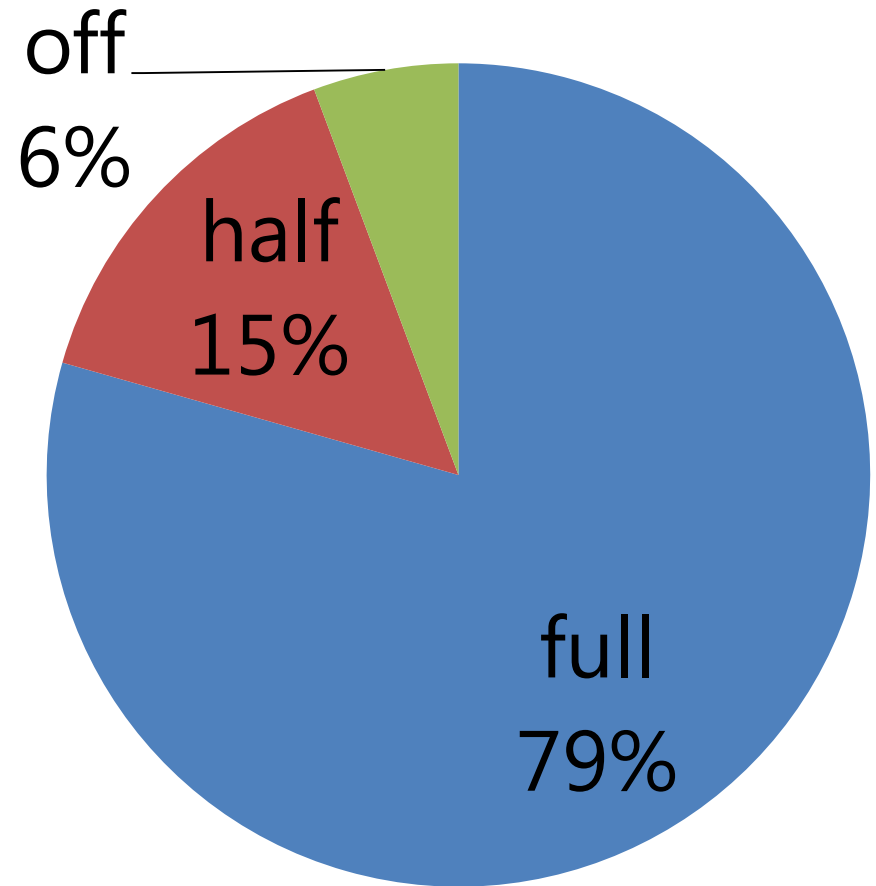
What kind of over night work(1.2y Dr. n=100)

- Work as usual 55.0%
- Work less than usual 33.0%
- Just waiting 12.0%



The day after over night work(n=1560)

- Full time work as usual 79.4%
- Half day off 14.9%
- Day off 5.7%



Low rate of Agreement of work

	Official contract	Objective management	Consultation office about work environment
1,2y Dr.	29.6 %	36.2 %	7.0 %
3~5y Dr.	30.6 %	32.9 %	11.8 %

Other Obtained results about junior doctors compared to senior

- Availability on request over work money
(Full, limitation, fix, unavailable,
do not request)
- Medical accidents rate
- Medical accidents stress level
- Cause of medial accident
- Health concern about themselves

Other Obtained results about junior doctors

- Support during pregnancy
- Opinion about doctor shortage, maldistribution.
- Opinion about physician assistant, medical clerk.

Next step

- Review more researches.
- Survey more by JDN-JMA
- Discuss **real situations**, because results of survey are sometimes **different from actual feeling**.



Japan Medical Association Junior Doctors Network

{ Chair, Kazuhiro Abe
kazuhiro_abe_1215@ybb.ne.jp

